

SINGLE USE SUPPORT.

PIONEERING BIOPHARMA



RoSS.LODR

Semi-automated loader for
single-use bags & bottles

Fast & easy loading
Improved ergonomics
Moveable & compact

RoSS.LODR

Ergonomic working thought differently

With **RoSS.LODR**, ergonomic work is rethought. The mobile gripper arm ensures ergonomic handling of the RoSS® shell for any loading or unloading activity, whether it be from the RoSS.FILL to the RoSS.RACK or the RoSS.RACK to RoSS.pFTU.

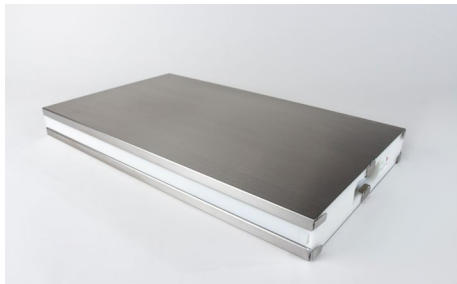
The innovative supporting device for enhanced transportation of heavy loads facilitates a safe working environment for the operator and can significantly reduce work related repetitive strain injuries.

Facts:

- Improve your productivity by faster & easier loading with the RoSS.LODR
- Improve ergonomics, health and safety when handling single-use bags up to 50L
- Customized shovel compatible with various secondary packaging options, including RoSS® Shell and bottles
- Rotatable and lockable shovel with 8 positions for versatile handling
- Soft-start functionality for smooth and secure operation
- Hold-to-run control mechanism for precise user management
- Integrated safety clutch for added protection



RoSS.pFTU Large Scale



RoSS Shell 20L



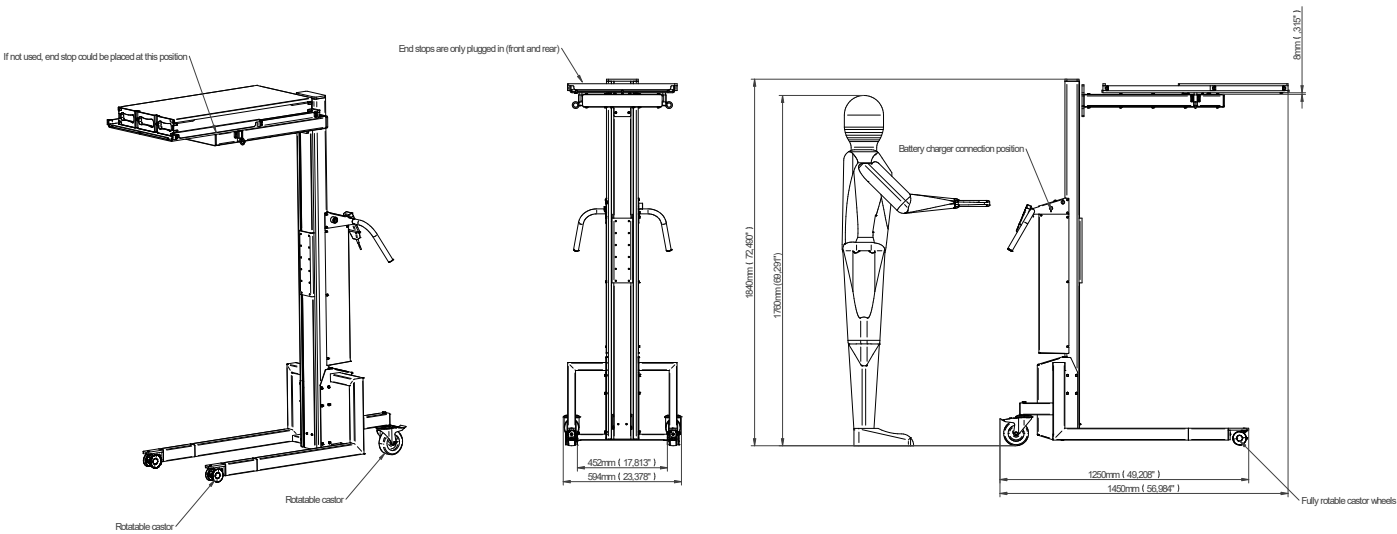
RoSS.RACK

RoSS.LODR

Ergonomic working thought differently

TECHNICAL SPECIFICATIONS

Dimensions* (WxDxH)	550x1450x1840mm
Maximum lifting height	1650mm
Power supply	Battery-powered (status indication via LED light)
Protection class	IP66
Net weight	Approx. 150 kg
Contact surface of the shovel	PTFE
Frame and gripper material	Stainless steel 1.4301



* The drawing and dimensions refer to RoSS.LODR, designed for liquids up to 30L



Single Use Support assists you from beginning to end, offering highly qualified support all along the way. Contact us for further details!