

# SINGLE USE SUPPORT.

PIONEERING BIOPHARMA



## RoSS.SHIP

Protect your RoSS shells for  
transportation at sub-zero temperature.

*Robust, stackable, compact.  
Keeps below -60°C for 6 days.*

# RoSS.SHIP

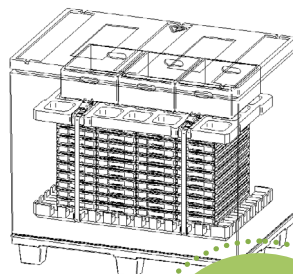
**RoSS.SHIP Single Use** can hold up **to 55 ROSS® shells** depending on their sizes. Most frozen substances can be **stored and shipped** in a protected manner and according to **international logistics standards**. The statically, highly robust RoSS.SHIP container is designed for **passive cooling** with **dry ice**.

RoSS.SHIP secures the cold chain storage and shipping of bulk drug substance for almost one week. Qualification against ASTM & ISTA has shown that the temperature inside RoSS.SHIP is **below -60°C for consecutive six days**. Therefore, it is best suitable for both short distance, but also long distance transportation including air-freight and international shipping of substances.

RoSS.SHIP can be tracked and monitored by interior temperature and geographical location 24/7 via GPS tracking. Upon request, also G-Force, Orientation, UV and air pressure can be tracked and accessed in real-time via a cloud-based portal.

## SHIP AND STORE YOUR BULK DRUG SUBSTANCE

- With our RoSS systems
- Single-use SHIPs keep cool for six days
- For all DS primary packagings
- To ensure 0% product loss during storing and transportation!



### Facts:

*Insulated shipping containers for passive cooling processes*

*Validation based on ISTA 7D 144h summer / ASTM D4169*

*Optional temperature- / GPS-tracking / G-Force / UV air pressure*

*Adjustable to all requirements and batch sizes*

*Suitable for phase change materials and dry ice*

*Immobilization of RoSS shells thanks integrated tension belts*

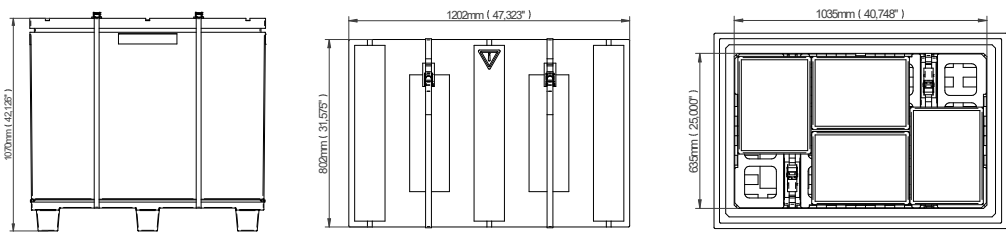
*Optional tamper-evident sealing*

*Below  
**-60°C**  
for consecutive  
six days*

**One SHIP fits it all:** any single-use bags in different sizes to be shipped at sub-zero temperature for 6 days.

# RoSS.SHIP

## RoSS.SHIP Single-use



Article Nr.	Net weight	Material	Cooling Tech.	RoSS Types	RoSS Capacity	Outer dimensions (l x d x h)	Temp. Range	Temp. Duration
SHIP_3001	40 kg	EPP	passive - dry ice	all RoSS possible up to 20 liters*	depending on size and RoSS type	1200 x 800 x 1070mm	to -70°C	min. 144 h

### RoSS types for max. loading capacity in RoSS.SHIP Single-Use

RoSS	Capacity RoSS	Capacity RoSS+CCUs**	CCUs**
RoSS_1006, 1007, 1022, 1031	12	4	1006
RoSS_1008_01, 1036	5	4	1008_01
RoSS_1008_02	8	5	1008_02
RoSS_1010, 1042	15	8	1010
RoSS_1011, 1019, 1052, 1053	30	15	1019
RoSS_1013	8	6	1013 15mm
RoSS_1013	8	4	1013 25mm
RoSS_1014_01/02	6	4	n.a.
RoSS_1015	6	4	1015
RoSS_1016, 1039, 1054, 1057	6	4	1016
RoSS_1017,1020	44	20	1017
RoSS_1018_01	8	5	1018_01
RoSS_1021	55	24	1021
RoSS_1028, 1046	12	4	1046
RoSS_1032, 1058	40	20	1032
RoSS_1037	6	4	1037
RoSS_1040	6	4	1040
RoSS_1041	6	4	1041
RoSS_1043	45	20	1043
RoSS_1047	8	4	n.a.
RoSS_1049	7	5	1049
RoSS_1051	27	15	1051
RoSS_1055	11	6	n.a.
RoSS_1056	6	4	1056
RoSS_1059	6	4	n.a.
RoSS_1060	5	4	n.a.

If your RoSS Shell is not listed in the table, we'll find a solution for your requirements. Please contact us for more information.

\*except RoSS\_1048 (20l)    \*\* CCU: Cyro Control Unit

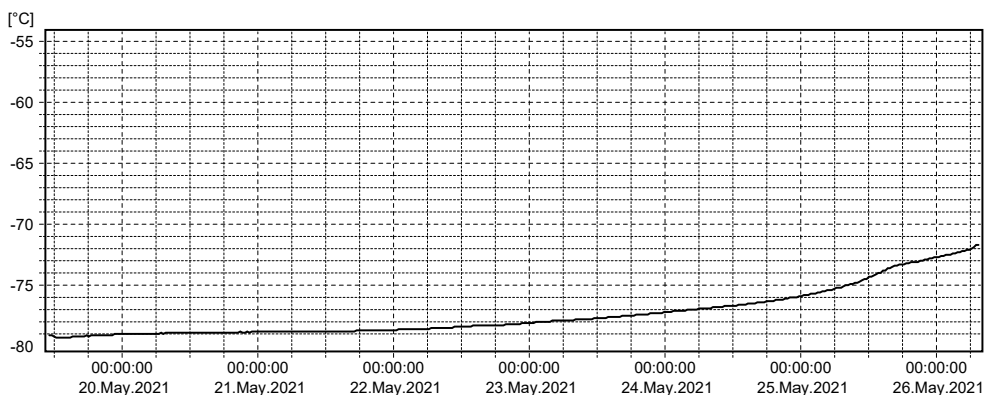
# RoSS.SHIP

## RoSS.SHIP Single-use



Single-Use Shipper RoSS.SHIP\_3001

SHIP\_3001  
Shipment Summary Report 200kg Dry Ice Loading



**Get your SHIP now and contact us: [sales@susupport.com](mailto:sales@susupport.com)**

SINGLE USE SUPPORT | Endach 36 | 6330 Kufstein / AUSTRIA | [sales@susupport.com](mailto:sales@susupport.com)

© Single Use Support

[www.susupport.com](http://www.susupport.com)